
Product Datasheet

Alpha-1A Adrenergic Receptor antibody (orb338919)

Description

Rabbit polyclonal antibody to ADRA1A

Species/Host

Rabbit

Reactivity

Human, Mouse, Rat

Conjugation

Unconjugated

Tested Applications

IF, IH, WB

Immunogen

KLH-conjugated synthetic peptide encompassing a sequence within the C-term region of human Alpha-1A Adrenergic Receptor. The exact sequence is proprietary.

Target

ADRA1A

Preservatives

Liquid in 0.42% Potassium phosphate, 0.87% Sodium chloride, pH 7.3, 30% glycerol, and 0.01% sodium azide.

Form/Appearance

Liquid in 0.42% Potassium phosphate, 0.87% Sodium chloride, pH 7.3, 30% glycerol, and 0.01% sodium azide.

Storage

Maintain refrigerated at 2-8°C for up to 2 weeks. For long term storage store at -20°C in small aliquots to prevent freeze-thaw cycles.

Note

For research use only

Clonality

Polyclonal

Source

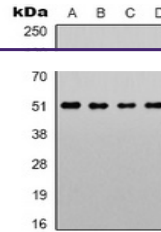
Rabbit

Uniprot ID
[P97718](#), [P43140](#), [P35348](#)
Entrez
[11549](#), [148](#), [29412](#)
Dilution Range

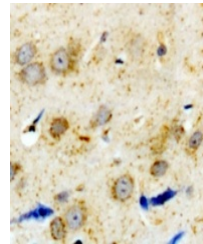
WB: 1:500-1000, IHC-P: 1:100-200, IF/ICC: 1:100-500

Expiration Date

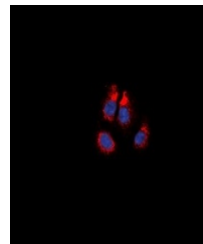
12 months from date of receipt.



Western blot analysis of Alpha-1A Adrenergic Receptor.



Immunohistochemical analysis of Alpha-1A Adrenergic Receptor.



Immunofluorescent analysis of Alpha-1A Adrenergic Receptor.