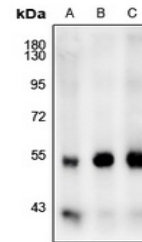


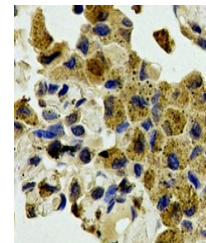
## Product Datasheet

### JNK1/2/3 antibody (orb338865)

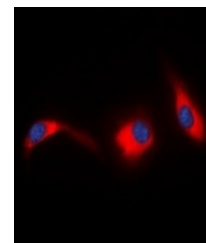
<b>Description</b>	Rabbit polyclonal antibody to MAPK8
<b>Species/Host</b>	Rabbit
<b>Reactivity</b>	Human, Mouse, Porcine, Rat
<b>Conjugation</b>	Unconjugated
<b>Tested Applications</b>	IF, IH, WB
<b>Immunogen</b>	KLH-conjugated synthetic peptide encompassing a sequence within the center region of human JNK1/2/3. The exact sequence is proprietary.
<b>Target</b>	MAPK8; MAPK9; MAPK10
<b>Preservatives</b>	Liquid in 0.42% Potassium phosphate, 0.87% Sodium chloride, pH 7.3, 30% glycerol, and 0.01% sodium azide.
<b>Form/Appearance</b>	Liquid in 0.42% Potassium phosphate, 0.87% Sodium chloride, pH 7.3, 30% glycerol, and 0.01% sodium azide.
<b>Storage</b>	Maintain refrigerated at 2-8°C for up to 2 weeks. For long term storage store at -20°C in small aliquots to prevent freeze-thaw cycles.
<b>Note</b>	For research use only
<b>Clonality</b>	Polyclonal
<b>Source</b>	Rabbit
<b>Uniprot ID</b>	<a href="#">Q61831</a> , <a href="#">Q91Y86</a> , <a href="#">P49186</a> , <a href="#">P53779</a> , <a href="#">P49187</a> , <a href="#">P45983</a> , <a href="#">P45984</a> , <a href="#">Q9WTU6</a> , <a href="#">P49185</a>
<b>Entrez</b>	<a href="#">50658</a> , <a href="#">5602</a> , <a href="#">26419</a> , <a href="#">26420</a> , <a href="#">5599</a> , <a href="#">5601</a> , <a href="#">25272</a> , <a href="#">116554</a>
<b>Dilution Range</b>	WB: 1:500-1000, IHC-P: 1:100-200, IF/ICC: 1:100-500
<b>Expiration Date</b>	12 months from date of receipt.



Western blot analysis of JNK1/2/3 expres...



Immunohistochemical analysis of JNK1/2/3...



Immunofluorescent analysis of JNK1/2/3 S...