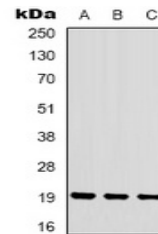


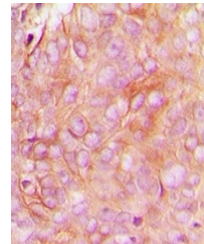
Product Datasheet

STMN1 (phospho-S16) antibody (orb338846)

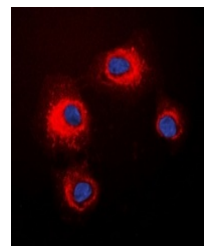
Description	Rabbit polyclonal antibody to STMN1
Species/Host	Rabbit
Reactivity	Human, Mouse, Porcine, Primate, Rat
Conjugation	Unconjugated
Tested Applications	IF, IH, WB
Immunogen	KLH-conjugated synthetic phosphopeptide corresponding to residues surrounding S16 of human STMN1 protein. The exact sequence is proprietary.
Target	STMN1
Preservatives	Liquid in 0.42% Potassium phosphate, 0.87% Sodium chloride, pH 7.3, 30% glycerol, and 0.01% sodium azide.
Form/Appearance	Liquid in 0.42% Potassium phosphate, 0.87% Sodium chloride, pH 7.3, 30% glycerol, and 0.01% sodium azide.
Storage	Maintain refrigerated at 2-8°C for up to 2 weeks. For long term storage store at -20°C in small aliquots to prevent freeze-thaw cycles.
Note	For research use only
Clonality	Polyclonal
Source	Rabbit
Uniprot ID	P13668 , P54227 , P16949
Entrez	29332 , 16765 , 3925
Dilution Range	WB: 1:500-1000, IHC-P: 1:100-200, IF/ICC: 1:100-500
Expiration Date	12 months from date of receipt.



Western blot analysis of STMN1 (Phospho-...



Immunohistochemical analysis of STMN1 (P...



Immunofluorescent analysis of STMN1 (Pho...