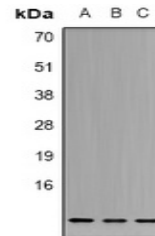


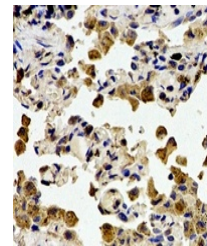
Product Datasheet

Cystatin A antibody (orb338840)

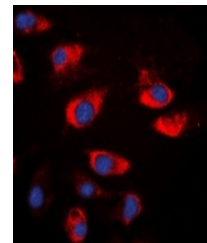
| | |
|----------------------------|---|
| Description | Rabbit polyclonal antibody to CSTA |
| Species/Host | Rabbit |
| Reactivity | Human, Rat |
| Conjugation | Unconjugated |
| Tested Applications | IF, IH, WB |
| Immunogen | KLH-conjugated synthetic peptide encompassing a sequence within the center region of human Cystatin A. The exact sequence is proprietary. |
| Target | CSTA |
| Preservatives | Liquid in 0.42% Potassium phosphate, 0.87% Sodium chloride, pH 7.3, 30% glycerol, and 0.01% sodium azide. |
| Form/Appearance | Liquid in 0.42% Potassium phosphate, 0.87% Sodium chloride, pH 7.3, 30% glycerol, and 0.01% sodium azide. |
| Storage | Maintain refrigerated at 2-8°C for up to 2 weeks. For long term storage store at -20°C in small aliquots to prevent freeze-thaw cycles. |
| Note | For research use only |
| Clonality | Polyclonal |
| Source | Rabbit |
| Uniprot ID | P01040 |
| Entrez | 1475 |
| Dilution Range | WB: 1:500-1000, IHC-P: 1:100-200, IF/ICC: 1:100-500 |
| Expiration Date | 12 months from date of receipt. |



Western blot analysis of Cystatin A expr...



Immunohistochemical analysis of Cystatin...



Immunofluorescent analysis of Cystatin A...