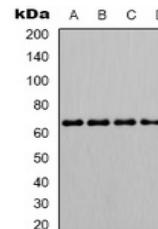


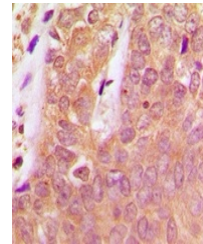
Product Datasheet

SHPTP1 (phospho-Y536) antibody (orb338828)

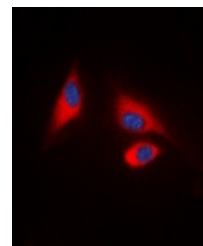
Description	Rabbit polyclonal antibody to PTPN6
Species/Host	Rabbit
Reactivity	Human, Mouse, Rat
Conjugation	Unconjugated
Tested Applications	IF, IH, WB
Immunogen	KLH-conjugated synthetic phosphopeptide corresponding to residues surrounding Y536 of human SHPTP1 protein. The exact sequence is proprietary.
Target	PTPN6
Preservatives	Liquid in 0.42% Potassium phosphate, 0.87% Sodium chloride, pH 7.3, 30% glycerol, and 0.01% sodium azide.
Form/Appearance	Liquid in 0.42% Potassium phosphate, 0.87% Sodium chloride, pH 7.3, 30% glycerol, and 0.01% sodium azide.
Storage	Maintain refrigerated at 2-8°C for up to 2 weeks. For long term storage store at -20°C in small aliquots to prevent freeze-thaw cycles.
Note	For research use only
Clonality	Polyclonal
Source	Rabbit
Uniprot ID	P29350 , P81718 , P29351
Entrez	116689 , 15170 , 5777
Dilution Range	WB: 1:500-1000, IHC-P: 1:100-200, IF/ICC: 1:100-500
Expiration Date	12 months from date of receipt.



Western blot analysis of SHPTP1 (Phospho...



Immunohistochemical analysis of SHPTP1 (...)



Immunofluorescent analysis of SHPTP1 (Ph...)