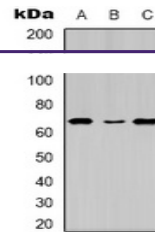

Product Datasheet

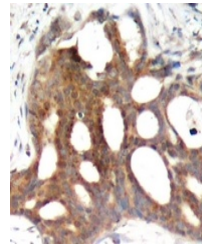
Estrogen Receptor alpha (phospho-S104) antibody (orb338824)

Description

Rabbit polyclonal antibody to ESR1



Western blot analysis of Estrogen Recept...



Immunohistochemical analysis of Estrogen...

Species/Host

Rabbit

Reactivity

Human, Mouse, Porcine, Rat

Conjugation

Unconjugated

Tested Applications

IH, WB

Immunogen

KLH-conjugated synthetic phosphopeptide corresponding to residues surrounding S104 of human Estrogen Receptor alpha protein. The exact sequence is proprietary.

Target

ESR1

Preservatives

Liquid in 0.42% Potassium phosphate, 0.87% Sodium chloride, pH 7.3, 30% glycerol, and 0.01% sodium azide.

Form/Appearance

Liquid in 0.42% Potassium phosphate, 0.87% Sodium chloride, pH 7.3, 30% glycerol, and 0.01% sodium azide.

Storage

Maintain refrigerated at 2-8°C for up to 2 weeks. For long term storage store at -20°C in small aliquots to prevent freeze-thaw cycles.

Note

For research use only

Clonality

Polyclonal

Source

Rabbit

Uniprot ID
[P19785](#), [P03372](#), [P06211](#)
Entrez
[2099](#), [24890](#), [13982](#)
Dilution Range

WB: 1:500-1000, IHC-P: 1:100-200

Expiration Date

12 months from date of receipt.