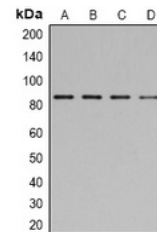


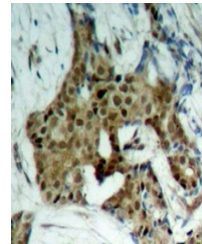
Product Datasheet

STAT1 (phospho-Y701) antibody (orb338823)

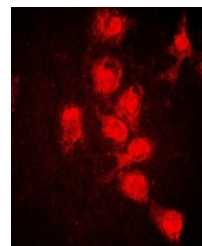
| | |
|----------------------------|---|
| Description | Rabbit polyclonal antibody to STAT1 |
| Species/Host | Rabbit |
| Reactivity | Human, Mouse, Porcine, Primate, Rabbit, Rat, Sheep |
| Conjugation | Unconjugated |
| Tested Applications | IF, IH, IP, WB |
| Immunogen | KLH-conjugated synthetic phosphopeptide corresponding to residues surrounding Y701 of human STAT1 protein. The exact sequence is proprietary. |
| Target | STAT1 |
| Preservatives | Liquid in 0.42% Potassium phosphate, 0.87% Sodium chloride, pH 7.3, 30% glycerol, and 0.01% sodium azide. |
| Form/Appearance | Liquid in 0.42% Potassium phosphate, 0.87% Sodium chloride, pH 7.3, 30% glycerol, and 0.01% sodium azide. |
| Storage | Maintain refrigerated at 2-8°C for up to 2 weeks. For long term storage store at -20°C in small aliquots to prevent freeze-thaw cycles. |
| Note | For research use only |
| Clonality | Polyclonal |
| Source | Rabbit |
| Uniprot ID | P42224 , P42225 |
| Entrez | 6772 |
| Dilution Range | WB: 1:500-1000, IHC-P: 1:100-200, IF/ICC: 1:100-500, IP: 1:10-100 |
| Expiration Date | 12 months from date of receipt. |



Western blot analysis of STAT1 (Phospho-...



Immunohistochemical analysis of STAT1 (P...



Immunofluorescent analysis of STAT1 (Pho...