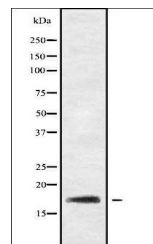


Product Datasheet

RGS21 antibody (orb338643)

Description	Rabbit polyclonal antibody to RGS21
Species/Host	Rabbit
Reactivity	Human, Mouse, Rat
Conjugation	Unconjugated
Tested Applications	IHC-P, WB
Storage	Maintain refrigerated at 2-8°C for up to 2 weeks. For long term storage store at -20°C in small aliquots to prevent freeze-thaw cycles.
Note	For research use only
Clonality	Polyclonal
Dilution Range	WB: 1:1000-3000, IHC-P: 1:200
Expiration Date	12 months from date of receipt.



Western blot analysis of HeLa whole cell...