

## Product Datasheet

### PKM2(phospho-Ser37) antibody (orb336828)

**Description** Rabbit polyclonal antibody to PKM2(phospho-Ser37)

**Species/Host** Rabbit

**Reactivity** Human, Mouse

**Conjugation** Unconjugated

**Tested Applications** WB

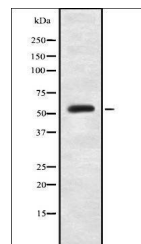
**Storage** Maintain refrigerated at 2-8°C for up to 2 weeks. For long term storage store at -20°C in small aliquots to prevent freeze-thaw cycles.

**Note** For research use only

**Clonality** Polyclonal

**Dilution Range** WB: 1:1000-3000

**Expiration Date** 12 months from date of receipt.



Western blot analysis of HeLa whole cell...