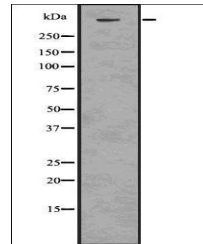


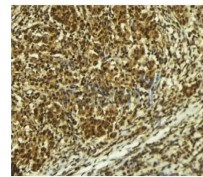
## Product Datasheet

# phospho -ATR(Phospho-S428) antibody (orb336599)

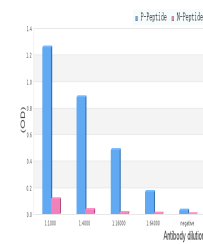
<b>Description</b>	Rabbit polyclonal antibody to phospho - ATR(Phospho-S428)
<b>Species/Host</b>	Rabbit
<b>Reactivity</b>	Human, Mouse, Rat
<b>Conjugation</b>	Unconjugated
<b>Tested Applications</b>	ELISA, IHC-P, WB
<b>Storage</b>	Maintain refrigerated at 2-8°C for up to 2 weeks. For long term storage store at -20°C in small aliquots to prevent freeze-thaw cycles.
<b>Note</b>	For research use only
<b>Clonality</b>	Polyclonal
<b>Dilution Range</b>	WB 1:1000-3000, IHC-P 1:200, ELISA(peptide): 1:20000-1:40000
<b>Expiration Date</b>	12 months from date of receipt.



Western blot analysis of COLO205 whole cell lysate.



Immunohistochemical staining of Human brain tissue.



Line graph illustrates the antibody titer for phospho-ATR antibody.