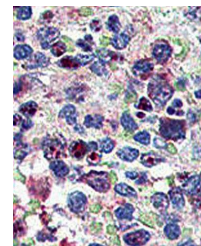
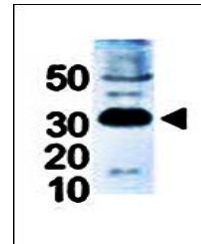


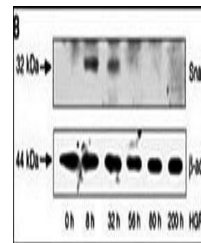
Product Datasheet

SNAIL antibody (orb33657)

Description	Rabbit polyclonal antibody to SNAIL belongs to the snail C2H2-type zinc-finger protein family. Snail...
Species/Host	Rabbit
Reactivity	Human
Conjugation	Unconjugated
Tested Applications	IHC-P, WB
Immunogen	Synthetic Peptide
Target	SNAI1
Form/Appearance	Purified polyclonal antibody supplied in PBS with 0.09% (W/V) sodium azide. This antibody is prepared by Saturated Ammonium Sulfate (SAS) precipitation followed by dialysis against PBS.
Storage	Maintain refrigerated at 2-8°C for up to 2 weeks. For long term storage store at -20°C in small aliquots to prevent freeze-thaw cycles
Note	For research use only
Isotype	Rabbit IgG
Clonality	Polyclonal
MW	29083
Uniprot ID	O95863
NCBI	NP_005976.2
Dilution Range	WB: 1:1000, IHC-P: 1:10-50
Expiration Date	12 months from date of receipt.



Immunohistochemical analysis of formalin...



Western blot analysis of HepG2 cells usi...