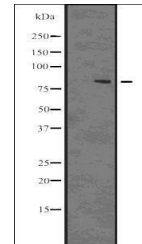


Product Datasheet

DRP1 (Phospho-Ser637) antibody (orb336568)

| | |
|----------------------------|---|
| Description | Rabbit polyclonal antibody to DRP1 (Phospho-Ser637) |
| Species/Host | Rabbit |
| Reactivity | Human, Mouse, Rat |
| Conjugation | Unconjugated |
| Tested Applications | IHC-P, WB |
| Immunogen | A synthesized peptide derived from human DNML1(Accession O00429), corresponding to amino acid residues around phosphorylated Ser637 |
| Target | Phospho-DRP1 (Ser637) Antibody detects endogenous levels of DRP1 only when phosphorylated at Ser637 |
| Form/Appearance | Rabbit IgG in phosphate buffered saline , pH 7.4, 150mM NaCl, 0.02% sodium azide and 50% glycerol |
| Storage | Store at -20 °C. Stable for 12 months from date of receipt |
| Note | For research use only |
| Isotype | IgG |
| Clonality | Polyclonal |
| Purity | The antibody is from purified rabbit serum by affinity purification via sequential chromatography on phospho-peptide and non-phospho-peptide affinity columns |
| MW | 82KD |
| Dilution Range | WB 1:1000-3000, IHC 1:50-1:200, IF/ICC 1:100-1:500 |
| Expiration Date | 12 months from date of receipt. |



Western blot analysis of 293 whole cell ...