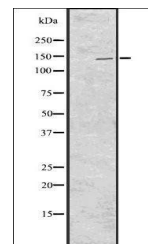


Product Datasheet

pan Cadherin antibody (orb336533)

| | |
|----------------------------|---|
| Description | Rabbit polyclonal antibody to pan Cadherin |
| Species/Host | Rabbit |
| Reactivity | Human, Mouse, Rat |
| Conjugation | Unconjugated |
| Tested Applications | ICC, IF, IHC-P, WB |
| Storage | Maintain refrigerated at 2-8°C for up to 2 weeks. For long term storage store at -20°C in small aliquots to prevent freeze-thaw cycles. |
| Note | For research use only |
| Clonality | Polyclonal |
| Dilution Range | WB: 1:1000-3000, IHC-P: 1:200 |
| Expiration Date | 12 months from date of receipt. |



Western blot analysis of 293 whole cell ...