
Product Datasheet

SOX2 antibody (orb33646)

Evolution Biocomponents.

Description SOX2 antibody

Species/Host

Rabbit

Reactivity

Human, Mouse, Rat

Conjugation

Unconjugated

Tested

IHC-P, WB

Applications

Immunogen

KLH conjugated synthetic peptide derived from human SOX2. Please contact us for the exact immunogen sequence. The peptide is available as orb12925.

Target

SOX2

Form/Appearance

10 mM PBS, 0.02% sodium azide

Concentration

- 100 µg (in 200 µl): 0.5 mg/ml- 200 µg (in 400 µl): 0.5 mg/ml

Storage

Store at 2-8°C for up to 6 months. For long term storage store at -20°C in small aliquots to prevent freeze-thaw cycles.

Note

For research use only

Isotype

IgG

Clonality

Polyclonal

Purity

Polyclonal antibodies are purified by peptide affinity chromatography

MW

34 kDa

Uniprot ID

[P48431](#)

NCBI

[003097](#), [003106](#), [31](#), [11](#)

Entrez

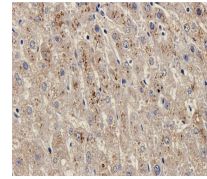
[6657](#)

Dilution Range

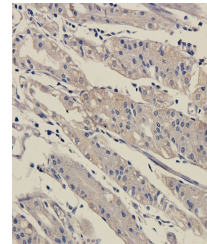
WB: 1:100-500, IHC-P: 1:100-500

Expiration Date

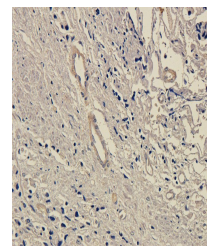
12 months from date of receipt.



Immunohistochemical staining of human li...



Immunohistochemical staining of human st...



Immunohistochemical staining of paraffin...