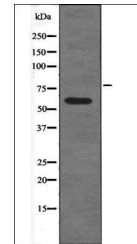


Product Datasheet

Smad3 (Phospho-Ser423+Ser425) antibody (orb335983)

Description	Rabbit polyclonal antibody to Smad3 (Phospho-Ser423+Ser425)
Species/Host	Rabbit
Reactivity	Human
Conjugation	Unconjugated
Tested Applications	WB
Storage	Maintain refrigerated at 2-8°C for up to 2 weeks. For long term storage store at -20°C in small aliquots to prevent freeze-thaw cycles.
Note	For research use only
Clonality	Polyclonal
Dilution Range	WB: 1:1000-3000
Expiration Date	12 months from date of receipt.



Western blot analysis of UV treated HeLa...