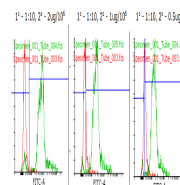


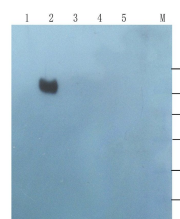
Product Datasheet

BMPR2 antibody (orb33598)

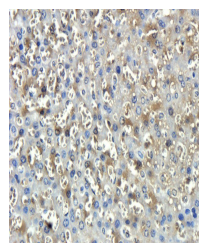
Description	BMPR2 antibody
Species/Host	Rabbit
Reactivity	Human, Mouse, Rat
Conjugation	Unconjugated
Tested Applications	ELISA, IHC-P, WB
Immunogen	KLH conjugated synthetic peptide derived from human BMPR2. Please contact us for the exact immunogen sequence. The peptide is available as orb374795.
Target	BMPR2
Form/Appearance	10 mM PBS, 0.02% sodium azide
Storage	Store at 4°C for up to two weeks. For long term storage, aliquot and store at -20°C, avoid freeze/thaw cycles
Note	For research use only
Isotype	IgG
Clonality	Polyclonal
Purity	Polyclonal antibodies are purified by peptide affinity chromatography
MW	115 kDa
Uniprot ID	Q13873 , O35607
NCBI	001204 , 61 , 001195 , 21
Entrez	659
Dilution Range	WB: 1:200-2000, IHC-P: 1:100-500
Expiration Date	12 months from date of receipt.



BMPR2 antibody



WB analysis of Hela cells (lane 1), rat ...



Immunohistochemical staining of rat live...