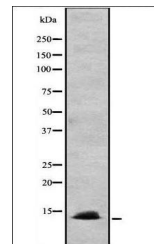


Product Datasheet

CCL24 antibody (orb335075)

Description	Rabbit polyclonal antibody to CCL24
Species/Host	Rabbit
Reactivity	Human
Conjugation	Unconjugated
Tested Applications	IHC-P, WB
Storage	Maintain refrigerated at 2-8°C for up to 2 weeks. For long term storage store at -20°C in small aliquots to prevent freeze-thaw cycles.
Note	For research use only
Clonality	Polyclonal
Expiration Date	12 months from date of receipt.



Western blot analysis of HEK293 cells us...