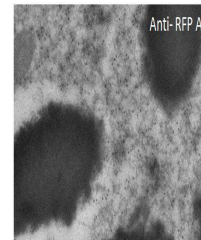


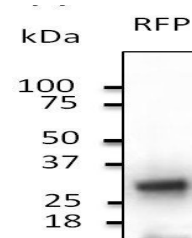
## Product Datasheet

### RFP antibody (orb334992)

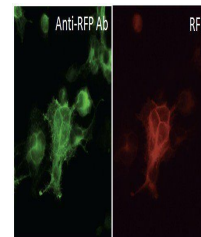
<b>Description</b>	Goat polyclonal antibody to RFP (Red fluorescent protein). RFP is derived from DsRed, an engineered ...
<b>Species/Host</b>	Goat
<b>Conjugation</b>	Unconjugated
<b>Tested Applications</b>	IEM, IF, IHC-Fr, IHC-P, WB
<b>Immunogen</b>	Purified recombinant RFP peptide produced in E. coli.
<b>Target</b>	RFP
<b>Preservatives</b>	PBS, 20% glycerol and 0.05% sodium azide
<b>Form/Appearance</b>	Polyclonal antibody supplied as a 100 µl (3 mg/ml) aliquot in PBS, 20% glycerol and 0.05% sodium azide. This antibody is epitope-affinity purified from goat antiserum.
<b>Concentration</b>	3 mg/ml
<b>Storage</b>	Store at -20°C for long-term storage. Store at 2-8°C for up to one month.
<b>Note</b>	For research use only
<b>Application notes</b>	The antibody solution should be gently mixed before use.
<b>Isotype</b>	IgG
<b>Clonality</b>	Polyclonal
<b>Dilution Range</b>	WB:1:500-1:2,000, IF:1:50-1:500, IHC-P:1:50-1:500, IHC-F:1:50-1:500, IEM:1:50-1:500
<b>Expiration Date</b>	12 months from date of receipt.



Immunohistochemical analysis of formalin...



Western blot analysis of staining of WB2...



Immunofluorescence analysis of 293HEK ce...