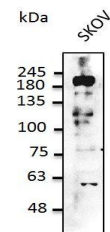


Product Datasheet

HER2 antibody (orb334988)

| | |
|----------------------------|---|
| Description | Goat polyclonal antibody to ERBB2. This protein is a member of the epidermal growth factor (EGF) rec... |
| Species/Host | Goat |
| Reactivity | Bovine, Canine, Donkey, Equine, Feline, Gallus, Goat, Guinea pig, Hamster, Human, Mouse, Other, Porcine, Primate, Rabbit, Rat, Sheep |
| Conjugation | Unconjugated |
| Tested Applications | IHC-Fr, IHC-P, WB |
| Immunogen | Purified recombinant peptide derived from within residues 1,177 aa to the C-terminus of human ERBB2 produced in E. coli. |
| Target | ERBB2 |
| Preservatives | PBS, 20% glycerol and 0.05% sodium azide |
| Form/Appearance | Polyclonal antibody supplied as a 200 µl (3 mg/ml) aliquot in PBS, 20% glycerol and 0.05% sodium azide. This antibody is epitope-affinity purified from goat antiserum. |
| Concentration | 3 mg/ml |
| Storage | Store at -20°C for long-term storage. Store at 2-8°C for up to one month. |
| Note | For research use only |
| Application notes | The antibody solution should be gently mixed before use. |
| Isotype | IgG |
| Clonality | Polyclonal |
| Dilution Range | WB:1:500-1:5,000, IHC-P:1:250-1:1,000, IHC-F:1:250-1:1,000 |
| Expiration Date | 12 months from date of receipt. |



Western blot analysis of staining of SKO...