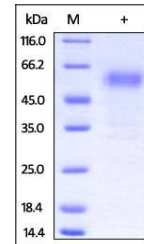


Product Datasheet

Rabbit PD-1 / PDCD1 Protein (orb334917)

| | |
|--------------------------|---|
| Description | Rabbit PD-1, Fc Tag is expressed from human 293 cells (HEK293). It contains AA Leu 25 - Gln 167 (Acc... |
| Reactivity | Rabbit |
| Endotoxins | 1.0 EU per µg |
| Conjugation | Unconjugated |
| Target | PD-1 |
| Preservatives | Tris with Glycine, Arginine and NaCl, pH7.5 |
| Form/Appearance | Powder |
| Storage | -20°C |
| Tag | C-Fc |
| Note | For research use only |
| Application notes | This protein carries a human IgG1 Fc tag at the C-terminus. The protein has a calculated MW of 42.6 kDa. The protein migrates as 55-66 kDa under reducing (R) condition (SDS-PAGE). |
| Protein Sequence | Leu 25 - Gln 167 |
| Purity | 95% |
| Source | Rabbit PD-1, Fc Tag (orb334917) is expressed from human 293 cells (HEK293). It contains AA Leu 25 - Gln 167 (Accession # G1SUF0). |
| MW | 42.6 kDa |
| Uniprot ID | G1SUF0 |
| Expiration Date | 6 months from date of receipt. |



SDS-PAGE analysis of Rabbit PD-1 protein