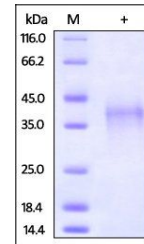


## Product Datasheet

### Rabbit PD-1 / PDCD1 Protein (orb334916)

<b>Description</b>	Rabbit PD-1, His Tag is expressed from human 293 cells (HEK293). It contains AA Leu 25 - Gln 167 (Ac...
<b>Reactivity</b>	Rabbit
<b>Endotoxins</b>	1.0 EU per µg
<b>Conjugation</b>	Unconjugated
<b>Target</b>	PD-1
<b>Preservatives</b>	PBS, pH7.4
<b>Form/Appearance</b>	Powder
<b>Storage</b>	-20°C
<b>Tag</b>	C-10×His
<b>Note</b>	For research use only
<b>Application notes</b>	This protein carries a polyhistidine tag at the C-terminus. The protein has a calculated MW of 17.9 kDa. The protein migrates as 33-36 kDa under reducing (R) condition (SDS-PAGE) due to glycosylation.
<b>Protein Sequence</b>	Leu 25 - Gln 167
<b>Purity</b>	95%
<b>Source</b>	Rabbit PD-1, His Tag (orb334916) is expressed from human 293 cells (HEK293). It contains AA Leu 25 - Gln 167 (Accession # G1SUF0).
<b>MW</b>	17.9 kDa
<b>Uniprot ID</b>	<b>G1SUF0</b>
<b>Expiration Date</b>	6 months from date of receipt.



SDS-PAGE analysis of Rabbit PD-1 protein