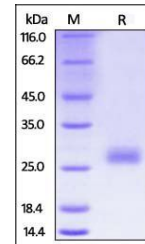


Product Datasheet

Mouse CTLA-4 / CD152 Protein (orb334893)

Description	Mouse CTLA-4, His Tag is expressed from human 293 cells (HEK293). It contains AA Glu 36 - Phe 162 (A...
Reactivity	Mouse
Endotoxins	1.0 EU per µg
Conjugation	Unconjugated
Target	CTLA-4
Preservatives	PBS, pH7.4
Form/Appearance	Powder
Storage	-20°C
Tag	C-10×His
Note	For research use only
Application notes	This protein carries a polyhistidine tag at the C-terminus. The protein has a calculated MW of 15.9 kDa. The protein migrates as 25-30 kDa under reducing (R) condition (SDS-PAGE) due to glycosylation.
Protein Sequence	NP_033973
Purity	95%
Source	Mouse CTLA-4, His Tag (orb334893) is expressed from human 293 cells (HEK293). It contains AA Glu 36 - Phe 162 (Accession # NP_033973).
MW	15.9 kDa
Uniprot ID	P09793
NCBI	NP_033973
Expiration Date	6 months from date of receipt.



SDS-PAGE analysis of Mouse CTLA-4 protei...