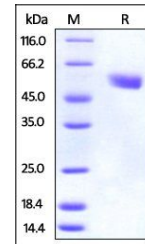


## Product Datasheet

### Mouse CTLA-4 / CD152 Protein (orb334892)

<b>Description</b>	Mouse CTLA-4, Fc Tag is expressed from human 293 cells (HEK293). It contains AA Glu 36 - Phe 162 (Ac...
<b>Reactivity</b>	Mouse
<b>Endotoxins</b>	1.0 EU per µg
<b>Conjugation</b>	Unconjugated
<b>Target</b>	CTLA-4
<b>Preservatives</b>	Tris with Glycine, Arginine and NaCl, pH7.5
<b>Form/Appearance</b>	Powder
<b>Storage</b>	-20°C
<b>Tag</b>	C-Fc
<b>Note</b>	For research use only
<b>Application notes</b>	This protein carries a human IgG1 Fc tag at the C-terminus. The protein has a calculated MW of 40.6 kDa. The protein migrates as 55 kDa under reducing (R) condition (SDS-PAGE) due to glycosylation.
<b>Protein Sequence</b>	NP_033973
<b>Purity</b>	95%
<b>Source</b>	Mouse CTLA-4, Fc Tag (orb334892) is expressed from human 293 cells (HEK293). It contains AA Glu 36 - Phe 162 (Accession # NP_033973).
<b>MW</b>	40.6 kDa
<b>Uniprot ID</b>	<b>P09793</b>
<b>NCBI</b>	<b>NP_033973</b>
<b>Expiration Date</b>	6 months from date of receipt.



SDS-PAGE analysis of Mouse CTLA-4 protei...