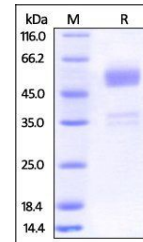


## Product Datasheet

### Human BTLA (31-150) Protein (orb334879)

<b>Description</b>	Human BTLA, Fc Tag is expressed from human 293 cells (HEK293). It contains AA Lys 31 - Ser 150 (Acce...
<b>Reactivity</b>	Human
<b>Endotoxins</b>	1.0 EU per µg
<b>Conjugation</b>	Unconjugated
<b>Target</b>	BTLA
<b>Preservatives</b>	Tris with Glycine, Arginine and NaCl, pH7.5
<b>Form/Appearance</b>	Powder
<b>Storage</b>	-20°C
<b>Tag</b>	C-Fc
<b>Note</b>	For research use only
<b>Application notes</b>	This protein carries a human IgG1 Fc tag at the C-terminus. The protein has a calculated MW of 40.4 kDa. The protein migrates as 52-60 kDa under reducing (R) condition (SDS-PAGE) due to glycosylation.
<b>Protein Sequence</b>	AAP44003.1
<b>Purity</b>	95%
<b>Source</b>	Human BTLA, Fc Tag (orb334879) is expressed from human 293 cells (HEK293). It contains AA Lys 31 - Ser 150 (Accession # AAP44003.1).
<b>MW</b>	40.4 kDa
<b>NCBI</b>	<a href="#">AAP44003.1</a>
<b>Expiration Date</b>	6 months from date of receipt.



SDS-PAGE analysis of Human BTLA protein