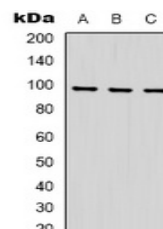


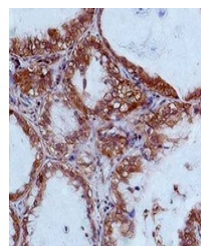
Product Datasheet

STAT2 antibody (orb334797)

Description	Rabbit polyclonal antibody to STAT2
Species/Host	Rabbit
Reactivity	Human, Mouse, Rat
Conjugation	Unconjugated
Tested Applications	IH, WB
Immunogen	Recombinant protein corresponding to human STAT2.
Target	STAT2
Preservatives	Liquid in 0.42% Potassium phosphate, 0.87% Sodium chloride, pH 7.3, 30% glycerol, and 0.01% sodium azide.
Form/Appearance	Liquid in 0.42% Potassium phosphate, 0.87% Sodium chloride, pH 7.3, 30% glycerol, and 0.01% sodium azide.
Storage	Maintain refrigerated at 2-8°C for up to 2 weeks. For long term storage store at -20°C in small aliquots to prevent freeze-thaw cycles.
Note	For research use only
Clonality	Polyclonal
Source	Rabbit
Uniprot ID	P52630
Entrez	6773
Dilution Range	WB: 1:1000-1:2000, IHC-P: 1:200-1:500
Expiration Date	12 months from date of receipt.



Western blot analysis of STAT2 expressio...



Immunohistochemical analysis of STAT2 st...