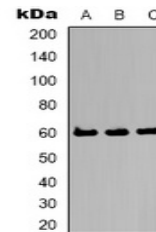


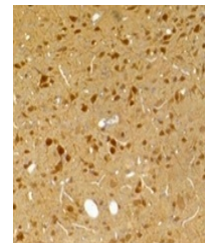
Product Datasheet

Kv10.2 antibody (orb334759)

Description	Rabbit polyclonal antibody to Kv10.2
Species/Host	Rabbit
Reactivity	Human, Mouse, Rat
Conjugation	Unconjugated
Tested Applications	IH, WB
Immunogen	KLH-conjugated synthetic peptide encompassing a sequence of human Kv10.2. The exact sequence is proprietary.
Target	KCNH5
Preservatives	Liquid in 0.42% Potassium phosphate, 0.87% Sodium chloride, pH 7.3, 30% glycerol, and 0.01% sodium azide.
Form/Appearance	Liquid in 0.42% Potassium phosphate, 0.87% Sodium chloride, pH 7.3, 30% glycerol, and 0.01% sodium azide.
Storage	Maintain refrigerated at 2-8°C for up to 2 weeks. For long term storage store at -20°C in small aliquots to prevent freeze-thaw cycles.
Note	For research use only
Clonality	Polyclonal
Source	Rabbit
Uniprot ID	Q8NCM2
Entrez	238271
Dilution Range	WB: 1:1000-1:2000, IHC-P: 1:100-1:200
Expiration Date	12 months from date of receipt.



Western blot analysis of Kv10.2 expressi...



Immunohistochemical analysis of Kv10.2 s...