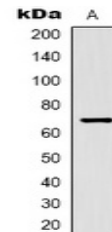


Product Datasheet

Kv1.5 antibody (orb334757)

Description	Rabbit polyclonal antibody to Kv1.5
Species/Host	Rabbit
Reactivity	Human
Conjugation	Unconjugated
Tested Applications	WB
Immunogen	KLH-conjugated synthetic peptide encompassing a sequence of human Kv1.5. The exact sequence is proprietary.
Target	KCNA5
Preservatives	Liquid in 0.42% Potassium phosphate, 0.87% Sodium chloride, pH 7.3, 30% glycerol, and 0.01% sodium azide.
Form/Appearance	Liquid in 0.42% Potassium phosphate, 0.87% Sodium chloride, pH 7.3, 30% glycerol, and 0.01% sodium azide.
Storage	Maintain refrigerated at 2-8°C for up to 2 weeks. For long term storage store at -20°C in small aliquots to prevent freeze-thaw cycles.
Note	For research use only
Clonality	Polyclonal
Source	Rabbit
Uniprot ID	P22460
Entrez	3741
Dilution Range	WB: 1:1000-1:2000
Expiration Date	12 months from date of receipt.



Western blot analysis of Kv1.5 expression...