

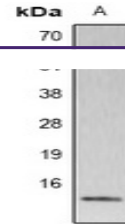
---

## Product Datasheet

### Histone H4 (Phospho-S80) antibody (orb334740)

**Description**

Rabbit polyclonal antibody to Histone H4


**Species/Host**

Rabbit

**Reactivity**

Human, Mouse, Rat

**Conjugation**

Unconjugated

**Tested Applications**

IH, WB

**Immunogen**

KLH-conjugated synthetic phosphopeptide corresponding to residues surrounding S80 of human Histone H4 protein. The exact sequence is proprietary.

**Target**

HIST1H4A; HIST1H4B; HIST1H4C; HIST1H4D; HIST1H4E; HIST1H4F; HIST1H4H; HIST1H4I; HIST1H4J; HIST1H4K; HIST1H4L; HIST2H4A; HIST2H4B; HIST4H4

**Preservatives**

Liquid in 0.42% Potassium phosphate, 0.87% Sodium chloride, pH 7.3, 30% glycerol, and 0.01% sodium azide.

**Form/Appearance**

Liquid in 0.42% Potassium phosphate, 0.87% Sodium chloride, pH 7.3, 30% glycerol, and 0.01% sodium azide.

**Storage**

Maintain refrigerated at 2-8°C for up to 2 weeks. For long term storage store at -20°C in small aliquots to prevent freeze-thaw cycles.

**Note**

For research use only

**Clonality**

Polyclonal

**Source**

Rabbit

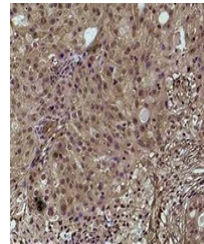
**Uniprot ID**
[P62805](#), [P62804](#), [P62806](#)
**Entrez**
[100041230](#), [100360950](#), [121504](#)
**Dilution Range**

WB: 1:1000-1:2000, IHC-P: 1:100-1:200

**Expiration Date**

12 months from date of receipt.

Western blot analysis of Histone H4 (Pho...



Immunohistochemical analysis of Histone ...