
Product Datasheet

Histone H4 (Phospho-S1) antibody (orb334738)

Description

Rabbit polyclonal antibody to Histone H4

Species/Host

Rabbit

Reactivity

Human, Mouse, Rat

Conjugation

Unconjugated

Tested Applications

IH, WB

Immunogen

KLH-conjugated synthetic phosphopeptide corresponding to residues surrounding S1 of human Histone H4 protein. The exact sequence is proprietary.

Target

HIST1H4A; HIST1H4B; HIST1H4C; HIST1H4D; HIST1H4E; HIST1H4F; HIST1H4H; HIST1H4I; HIST1H4J; HIST1H4K; HIST1H4L; HIST2H4A; HIST2H4B; HIST4H4

Preservatives

Liquid in 0.42% Potassium phosphate, 0.87% Sodium chloride, pH 7.3, 30% glycerol, and 0.01% sodium azide.

Form/Appearance

Liquid in 0.42% Potassium phosphate, 0.87% Sodium chloride, pH 7.3, 30% glycerol, and 0.01% sodium azide.

Storage

Maintain refrigerated at 2-8°C for up to 2 weeks. For long term storage store at -20°C in small aliquots to prevent freeze-thaw cycles.

Note

For research use only

Clonality

Polyclonal

Source

Rabbit

Uniprot ID

[P62805](#), [P62804](#), [P62806](#)

Entrez

[100041230](#), [100360950](#), [121504](#)

Dilution Range

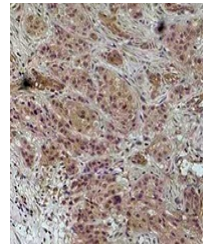
WB: 1:1000-1:2000, IHC-P: 1:100-1:200

Expiration Date

12 months from date of receipt.



Western blot analysis of Histone H4 (Pho...



Immunohistochemical analysis of Histone ...