

---

## Product Datasheet

### Histone H3 (Phospho-T32) antibody (orb334717)

**Description**

Rabbit polyclonal antibody to Histone H3

**Species/Host**

Rabbit

**Reactivity**

Human, Mouse, Rat

**Conjugation**

Unconjugated

**Tested Applications**

IH, WB

**Immunogen**

KLH-conjugated synthetic phosphopeptide corresponding to residues surrounding T32 of human Histone H3 protein. The exact sequence is proprietary.

**Target**

HIST1H3A; HIST1H3B; HIST1H3C; HIST1H3D; HIST1H3E; HIST1H3F; HIST1H3G; HIST1H3H; HIST1H3I; HIST1H3J; HIST2H3A; HIST2H3C; HIST2H3D; H3F3A; H3F3B

**Preservatives**

Liquid in 0.42% Potassium phosphate, 0.87% Sodium chloride, pH 7.3, 30% glycerol, and 0.01% sodium azide.

**Form/Appearance**

Liquid in 0.42% Potassium phosphate, 0.87% Sodium chloride, pH 7.3, 30% glycerol, and 0.01% sodium azide.

**Storage**

Maintain refrigerated at 2-8°C for up to 2 weeks. For long term storage store at -20°C in small aliquots to prevent freeze-thaw cycles.

**Note**

For research use only

**Clonality**

Polyclonal

**Source**

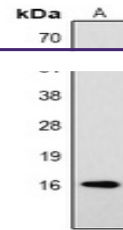
Rabbit

**Uniprot ID**
[P84228](#), [P68431](#), [P68433](#), [P84245](#), [Q6LED0](#), [Q71DI3](#), [P84243](#), [P84244](#)
**Entrez**
[8357](#), [319152](#), [291159](#), [15078](#), [8354](#), [8353](#), [8355](#), [8351](#), [8968](#), [100361558](#), [15077](#), [8352](#), [8350](#), [8356](#), [8358](#)
**Dilution Range**

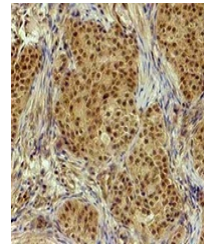
WB: 1:1000-1:2000, IHC-P: 1:200-1:500

**Expiration Date**

12 months from date of receipt.



Western blot analysis of Histone H3 (Pho...



Immunohistochemical analysis of Histone ...