

---

## Product Datasheet

### Histone H2B (AcK12) antibody (orb334674)

**Description**

Rabbit polyclonal antibody to Histone H2B

kDa A


**Species/Host**

Rabbit

**Reactivity**

Human, Mouse, Rat

**Conjugation**

Unconjugated

**Tested Applications**

IH, WB

Western blot analysis of Histone H2B (Ac...

**Immunogen**

KLH-conjugated synthetic acetylated peptide corresponding to residues surrounding K12 of human Histone H2B protein. The exact sequence is proprietary.

**Target**

HIST1H2BC

**Preservatives**

Liquid in 0.42% Potassium phosphate, 0.87% Sodium chloride, pH 7.3, 30% glycerol, and 0.01% sodium azide.

**Form/Appearance**

Liquid in 0.42% Potassium phosphate, 0.87% Sodium chloride, pH 7.3, 30% glycerol, and 0.01% sodium azide.

**Storage**

Maintain refrigerated at 2-8°C for up to 2 weeks. For long term storage store at -20°C in small aliquots to prevent freeze-thaw cycles.

**Note**

For research use only

**Clonality**

Polyclonal

**Source**

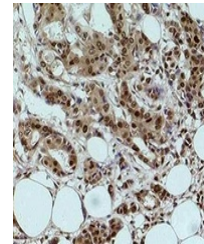
Rabbit

**Uniprot ID**
[P70696](#), [Q00729](#), [P62807](#), [Q6ZWY9](#), [Q64475](#), [Q96A08](#), [P33778](#)
**Entrez**
[8344](#), [319177](#), [319179](#), [319178](#), [24829](#), [3018](#), [8339](#), [255626](#), [8343](#), [8347](#), [8346](#), [3017](#)
**Dilution Range**

WB: 1:1000-1:2000, IHC-P: 1:200-1:500

**Expiration Date**

12 months from date of receipt.



Immunohistochemical analysis of Histone ...