
Product Datasheet

Histone H2A.X (Phospho-Y142) antibody (orb334669)

Description

Rabbit polyclonal antibody to Histone H2A.X

Species/Host

Rabbit

Reactivity

Human, Mouse, Rat

Conjugation

Unconjugated

Tested Applications

IH, WB

Immunogen

KLH-conjugated synthetic phosphopeptide corresponding to residues surrounding Y142 of human Histone H2A.X protein. The exact sequence is proprietary.

Target

H2AFX

Preservatives

Liquid in 0.42% Potassium phosphate, 0.87% Sodium chloride, pH 7.3, 30% glycerol, and 0.01% sodium azide.

Form/Appearance

Liquid in 0.42% Potassium phosphate, 0.87% Sodium chloride, pH 7.3, 30% glycerol, and 0.01% sodium azide.

Storage

Maintain refrigerated at 2-8°C for up to 2 weeks. For long term storage store at -20°C in small aliquots to prevent freeze-thaw cycles.

Note

For research use only

Clonality

Polyclonal

Source

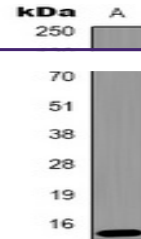
Rabbit

Uniprot ID
[P16104](#), [P27661](#)
Entrez
[15270](#), [3014](#)
Dilution Range

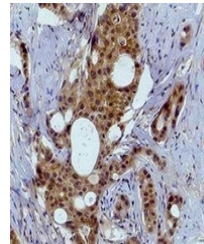
WB: 1:1000-1:2000, IHC-P: 1:200-1:500

Expiration Date

12 months from date of receipt.



Western blot analysis of Histone H2A.X (...



Immunohistochemical analysis of Histone ...