
Product Datasheet

Histone H1 (Phospho-T17) antibody (orb334658)

Description

Rabbit polyclonal antibody to Histone H1

Species/Host

Rabbit

Reactivity

Human, Mouse, Rat

Conjugation

Unconjugated

Tested Applications

IH, WB

Immunogen

KLH-conjugated synthetic phosphopeptide corresponding to residues surrounding T17 of human Histone H1 protein. The exact sequence is proprietary.

Target

HIST1H1A; HIST1H1C; HIST1H1D; HIST1H1E

Preservatives

Liquid in 0.42% Potassium phosphate, 0.87% Sodium chloride, pH 7.3, 30% glycerol, and 0.01% sodium azide.

Form/Appearance

Liquid in 0.42% Potassium phosphate, 0.87% Sodium chloride, pH 7.3, 30% glycerol, and 0.01% sodium azide.

Storage

Maintain refrigerated at 2-8°C for up to 2 weeks. For long term storage store at -20°C in small aliquots to prevent freeze-thaw cycles.

Note

For research use only

Clonality

Polyclonal

Source

Rabbit

Uniprot ID

[Q02539](#), [P43274](#), [P10412](#), [P16403](#), [P43277](#), [P15864](#), [P43275](#), [P16402](#), [P15865](#), [D4A3K5](#)

Entrez

[14957](#), [3006](#), [3007](#), [291145](#), [50709](#), [3024](#), [201097](#), [80838](#), [3008](#), [50708](#)

Dilution Range

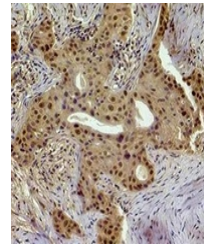
WB: 1:1000-1:2000, IHC-P: 1:200-1:500

Expiration Date

12 months from date of receipt.



Western blot analysis of Histone H1 (Pho...



Immunohistochemical analysis of Histone ...