

---

## Product Datasheet

### Histone H1 (Phospho-S2) antibody (orb334657)

**Description**

Rabbit polyclonal antibody to Histone H1

**Species/Host**

Rabbit

**Reactivity**

Human, Mouse, Rat

**Conjugation**

Unconjugated

**Tested Applications**

IH, WB

**Immunogen**

KLH-conjugated synthetic phosphopeptide corresponding to residues surrounding S2 of human Histone H1 protein. The exact sequence is proprietary.

**Target**

HIST1H1A; HIST1H1C; HIST1H1D; HIST1H1E

**Preservatives**

Liquid in 0.42% Potassium phosphate, 0.87% Sodium chloride, pH 7.3, 30% glycerol, and 0.01% sodium azide.

**Form/Appearance**

Liquid in 0.42% Potassium phosphate, 0.87% Sodium chloride, pH 7.3, 30% glycerol, and 0.01% sodium azide.

**Storage**

Maintain refrigerated at 2-8°C for up to 2 weeks. For long term storage store at -20°C in small aliquots to prevent freeze-thaw cycles.

**Note**

For research use only

**Clonality**

Polyclonal

**Source**

Rabbit

**Uniprot ID**

[Q02539](#), [P43274](#), [P10412](#), [P16403](#), [P43277](#), [P15864](#), [P43275](#), [P16402](#), [P15865](#), [D4A3K5](#)

**Entrez**

[14957](#), [3006](#), [3007](#), [291145](#), [50709](#), [3024](#), [201097](#), [80838](#), [3008](#), [50708](#)

**Dilution Range**

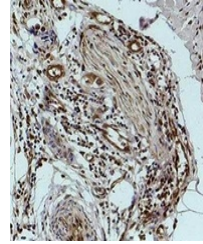
WB: 1:1000-1:2000, IHC-P: 1:200-1:500

**Expiration Date**

12 months from date of receipt.



Western blot analysis of Histone H1 (Pho...



Immunohistochemical analysis of Histone ...