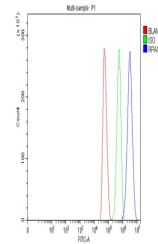


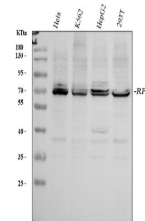
Product Datasheet

RPA70/RPA1 Antibody (orb334619)

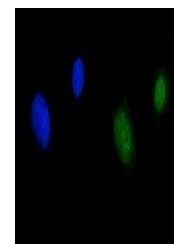
Description	RPA70/RPA1 Antibody
Species/Host	Rabbit
Reactivity	Human
Conjugation	Unconjugated
Tested Applications	FC, ICC, IF, WB
Immunogen	A synthetic peptide corresponding to a sequence at the C-terminus of human RPA70 (533-568aa QESAEAILGQNAAYLGELKDKNEQAFEEVFQANFR), different from the related mouse sequence by three amino acids.
Form/Appearance	Lyophilized
Concentration	Adding 0.2 ml of distilled water will yield a concentration of 500 µg/ml.
Storage	Store at -20°C for one year from date of receipt. After reconstitution, at 4°C for one month. It can also be aliquotted and stored frozen at -20°C for six months. Avoid repeated freeze-thaw cycles.
Note	For research use only
Application notes	Tested Species: In-house tested species with positive results. Other applications have not been tested. Optimal dilutions should be determined by end users. . Add 0.2ml of distilled water will yield a concentration of 500ug/ml.
Isotype	Rabbit IgG
Clonality	Polyclonal
MW	68138 MW
Uniprot ID	P27694
Expiration Date	12 months from date of receipt.



Flow Cytometry analysis of U251 cells us...



WB analysis of RPA70 using anti-RPA70 an...



IF analysis of RPA70 using anti-RPA70 an...