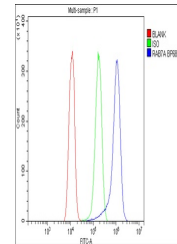


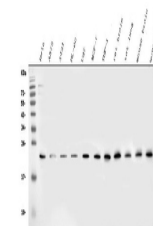
Product Datasheet

RAB7/RAB7A Antibody (orb334616)

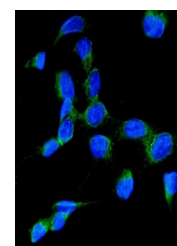
Description	RAB7/RAB7A Antibody
Species/Host	Rabbit
Reactivity	Human, Mouse, Rat
Conjugation	Unconjugated
Tested Applications	FC, ICC, IF, WB
Immunogen	A synthetic peptide corresponding to a sequence at the C-terminus of human RAB7 (157-196aa KEAINVEQAFQTIARNALKQETEVELYNEFPEPIKLDKND), identical to the related mouse sequence, and different from the related rat sequence by one amino acid.
Form/Appearance	Lyophilized
Concentration	Adding 0.2 ml of distilled water will yield a concentration of 500 µg/ml.
Storage	Store at -20°C for one year from date of receipt. After reconstitution, at 4°C for one month. It can also be aliquotted and stored frozen at -20°C for six months. Avoid repeated freeze-thaw cycles.
Note	For research use only
Application notes	Tested Species: In-house tested species with positive results. Other applications have not been tested. Optimal dilutions should be determined by end users. . Add 0.2ml of distilled water will yield a concentration of 500ug/ml.
Isotype	Rabbit IgG
Clonality	Polyclonal
MW	23490 MW
Uniprot ID	P51149
Expiration Date	12 months from date of receipt.



Flow Cytometry analysis of A431 cells us...



WB analysis using anti-RAB7 antibody.1:h...



IF analysis of RAB7 using anti-RAB7 anti...