

---

## Product Datasheet

### Galectin 1/LGALS1 Antibody (orb334576)

**Description**

Galectin 1/LGALS1 Antibody


**Species/Host**

Rabbit

**Reactivity**

Human, Mouse, Rat

**Conjugation**

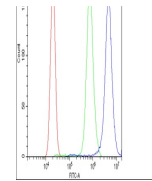
Unconjugated

**Tested**

ELISA, FC, ICC, IF, IHC, WB

**Applications**
**Immunogen**

E. coli-derived human Galectin 1 recombinant protein (Position: A2-D135). Human Galectin 1 shares 88% and 90% amino acid (aa) sequence identity with mouse and rat Galectin 1, respectively.



Flow Cytometry analysis of PC-3 cells us...

**Form/Appearance**

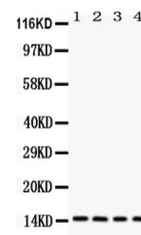
Lyophilized

**Concentration**

Adding 0.2 ml of distilled water will yield a concentration of 500 µg/ml.

**Storage**

Store at -20°C for one year from date of receipt. After reconstitution, at 4°C for one month. It can also be aliquotted and stored frozen at -20°C for six months. Avoid repeated freeze-thaw cycles.



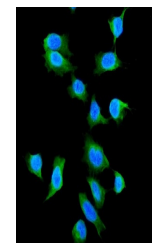
WB analysis of Galectin 1 using anti-Gal...

**Note**

For research use only

**Application notes**

Tested Species: In-house tested species with positive results. By Heat: Boiling the paraffin sections in 10mM citrate buffer, pH6.0, for 20mins is required for the staining of formalin/paraffin sections. Other applications have not been tested. Optimal dilutions should be determined by end users. Add 0.2ml of distilled water will yield a concentration of 500ug/ml.



IF analysis of Galectin 1 using anti-Gal...

**Isotype**

Rabbit IgG

**Clonality**

Polyclonal

**MW**

14716 MW

**Uniprot ID**
[P09382](https://www.uniprot.org/uniprot/P09382)
**Expiration Date**

12 months from date of receipt.