
Product Datasheet

UBE1C/UBA3 Antibody (orb334570)

Description

UBE1C/UBA3 Antibody

Species/Host

Rabbit

Reactivity

Human, Mouse, Rat

Conjugation

Unconjugated

Tested Applications

FC, ICC, IF, IHC, WB

Immunogen

A synthetic peptide corresponding to a sequence at the C-terminus of human UBE1C (409-448aa KNRTL^YLQSVTSIEERTRPNLSKTLKELGLVDGQELAVAD), identical to the related mouse and rat sequences.

Form/Appearance

Lyophilized

Concentration

Adding 0.2 ml of distilled water will yield a concentration of 500 µg/ml.

Storage

Store at -20°C for one year from date of receipt. After reconstitution, at 4°C for one month. It can also be aliquotted and stored frozen at -20°C for six months. Avoid repeated freeze-thaw cycles.

Note

For research use only

Application notes

Tested Species: In-house tested species with positive results.
 Predicted Species: Species predicted to be fit for the product based on sequence similarities. By Heat: Boiling the paraffin sections in 10mM citrate buffer, pH6.0, for 20mins is required for the staining of formalin/paraffin sections. Other applications have not been tested. Optimal dilutions should be determined by end users. Add 0.2ml of distilled water will yield a concentration of 500ug/ml.

Isotype

Rabbit IgG

Clonality

Polyclonal

MW

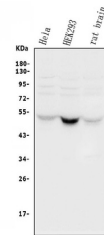
51852 MW

Uniprot ID
[Q8TBC4](#)
Expiration Date

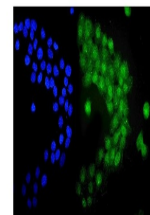
12 months from date of receipt.



Flow Cytometry analysis of A549 cells us...



WB analysis of UBE1C using anti-UBE1C an...



IF analysis of UBE1C using anti-UBE1C an...