
Product Datasheet

eIF4A2 Antibody (orb334490)

Description

eIF4A2 Antibody

Species/Host

Rabbit

Reactivity

Human, Mouse, Rat

Conjugation

Unconjugated

Tested

FC, ICC, IF, IHC, IHC-Fr, WB

Applications
Immunogen

A synthetic peptide corresponding to a sequence at the N-terminus of human eIF4A2 (5-31aa SADYNREHGGPEGMPDGDVIESNWNEI), identical to the related mouse and rat sequences.

Form/Appearance

Lyophilized

Concentration

Adding 0.2 ml of distilled water will yield a concentration of 500 µg/ml.

Storage

Store at -20°C for one year from date of receipt. After reconstitution, at 4°C for one month. It can also be aliquotted and stored frozen at -20°C for six months. Avoid repeated freeze-thaw cycles.

Note

For research use only

Application notes

Tested Species: In-house tested species with positive results.
 By Heat: Boiling the paraffin sections in 10mM citrate buffer, pH6.0, for 20mins is required for the staining of formalin/paraffin sections. Other applications have not been tested. Optimal dilutions should be determined by end users.
 . Add 0.2ml of distilled water will yield a concentration of 500ug/ml.

Isotype

Rabbit IgG

Clonality

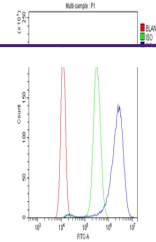
Polyclonal

MW

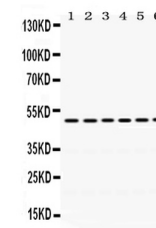
46402 MW

Uniprot ID
[Q14240](#)
Expiration Date

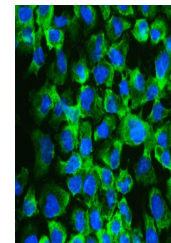
12 months from date of receipt.



Flow Cytometry analysis of SiHa cells us...



WB analysis of eIF4A2 using anti-eIF4A2 ...



IF analysis of eIF4A2 using anti-eIF4A2 ...