
Product Datasheet

alpha 1d Adrenergic Receptor/ADRA1A Antibody (orb334484)

Description

alpha 1d Adrenergic Receptor/ADRA1A Antibody

Species/Host

Rabbit

Reactivity

Human, Mouse, Rat

Conjugation

Unconjugated

Tested

WB

Applications
Immunogen

A synthetic peptide corresponding to a sequence at the C-terminus of human ADRA1A (335-373aa KAFQNVLRIQCLCRKQSSKHALGYTLHPPSQAVEGQHKD), different from the related mouse and rat sequences by four amino acids.

Form/Appearance

Lyophilized

Concentration

Adding 0.2 ml of distilled water will yield a concentration of 500 µg/ml.

Storage

Store at -20°C for one year from date of receipt. After reconstitution, at 4°C for one month. It can also be aliquotted and stored frozen at -20°C for six months. Avoid repeated freeze-thaw cycles.

Note

For research use only

Application notes

Tested Species: In-house tested species with positive results. Other applications have not been tested. Optimal dilutions should be determined by end users. . Add 0.2ml of distilled water will yield a concentration of 500ug/ml.

Isotype

Rabbit IgG

Clonality

Polyclonal

MW

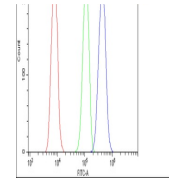
51487 MW

Uniprot ID
[P35348](#)
Sensitivity

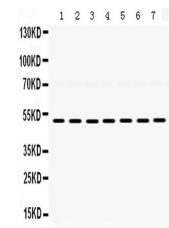
> 5000 cells

Expiration Date

12 months from date of receipt.

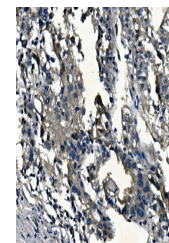


Flow Cytometry analysis of A431 cells us...



WB analysis of ADRA1A using anti-ADRA1A

...



IHC analysis of ADRA1A using anti-ADRA1A...