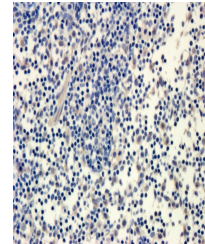


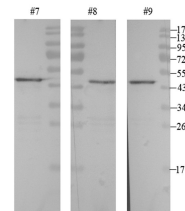
Product Datasheet

alpha 1 Antitrypsin antibody (orb334222)

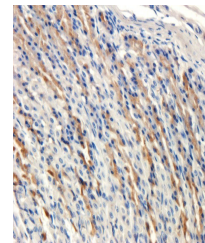
Description	alpha 1 Antitrypsin antibody
Species/Host	Mouse
Reactivity	Human, Rat
Conjugation	Unconjugated
Tested Applications	ELISA, IHC-P, WB
Immunogen	Synthetic peptide (please contact us for details)
Target	alpha 1 Antitrypsin. Recognizes endogenous levels of alpha 1 Antitrypsin protein
Form/Appearance	Liquid: 10 mM PBS, 0.02% sodium azide
Concentration	- 100 µg (in 200 µl): 0.5 mg/ml- 200 µg (in 400 µl): 0.5 mg/ml
Storage	Store at 4°C for up to two weeks. For long term storage, aliquot and store at -20°C, avoid freeze/thaw cycles.
Note	For research use only
Isotype	IgG1
Clonality	Monoclonal
Purity	Monoclonal antibodies are purified by peptide affinity chromatography
MW	46 kDa
Uniprot ID	P17475 , Q00896 , P01009
NCBI	000295 , 000286
Entrez	5265
Expiration Date	12 months from date of receipt.



Immunohistochemical staining of paraffin...



Western blot analysis of Trx - 32A1AT re...



IHC-P image of rat stomach tissue using ...