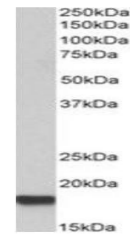


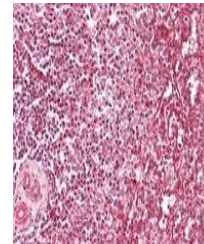
Product Datasheet

IFITM3 antibody (orb334059)

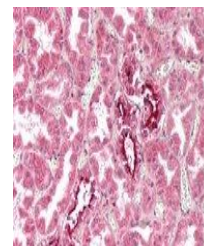
Description	Goat polyclonal antibody to IFITM3
Species/Host	Goat
Reactivity	Human
Conjugation	Unconjugated
Tested Applications	ELISA, IHC, WB
Target	IFITM3
Preservatives	Supplied at 0.5 mg/ml in Tris saline, 0.02% sodium azide, pH 7.3 with 0.5% bovine serum albumin. Aliquot and store at -20°C. Minimize freezing and thawing.
Storage	Aliquot and store at -20°C. Minimize freezing and thawing.
Note	For research use only
Application notes	WB: Approx 17kDa band observed in lysates of cell line HeLa (calculated MW of 14.6kDa according to NP_066362.2). The observed molecular weight corresponds to the lipidated form. Recommended concentration: 0.3-1µg/ml. Primary incubation was 1 hour.. IHC: Paraffin embedded Human Kidney and Spleen. Recommended concentration: 2.5µg/ml.
Protein Sequence	HNPAPPTSTVIHRS
Clonality	Polyclonal
MW	14.6
Entrez	10410
Dilution Range	ELISA: 1:64000, WB: 0.3-1 µg/ml, IHC-P: 2.5 µg/ml
Expiration Date	12 months from date of receipt.



Western blot analysis of HeLa lysate using IFITM3 antibody.



Immunohistochemical staining of Human Spleen tissue.



Immunohistochemical staining of Human Kidney tissue.