
Product Datasheet

HSPD1 antibody (orb334054)

Description

Goat polyclonal antibody to HSPD1

Species/Host

Goat

Reactivity

Bovine, Canine, Human, Porcine

Conjugation

Unconjugated

Tested Applications

ELISA, IF, IHC, WB

Target

HSP60 / HSPD1 (aa333-344)

Preservatives

Supplied at 0.5 mg/ml in Tris saline, 0.02% sodium azide, pH 7.3 with 0.5% bovine serum albumin. Aliquot and store at -20°C. Minimize freezing and thawing.

Storage

Aliquot and store at -20°C. Minimize freezing and thawing.

Note

For research use only

Application notes

WB: Approx 60kDa band observed in Human and Pig Heart, Kidney and Liver and in Rat Kidney lysates (calculated MW of 61.1kDa according to Human NP_002147.2 and 60.9kDa according to Pig NP_001241645.1 and Rat NP_071565.2). Recommended concentration: 0.01-0.1µg. IHC: Paraffin embedded Human Kidney. Recommended concentration: 5µg/ml.. Notes: Immunofluorescence: Strong expression of the protein seen in the mitochondria of HeLa cells and in the cytoplasm of A431 cells. Recommended concentration: 10µg/ml.

Protein Sequence

NLEDVQPHDLGK

Clonality

Polyclonal

MW

61.1

Entrez
3329
Dilution Range

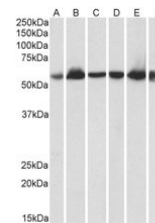
ELISA: 1:64000, WB: 0.01-0.1 µg/ml, IHC-P: 5 µg/ml

Expiration Date

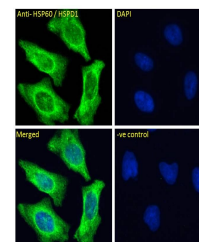
12 months from date of receipt.



Western blot analysis of Rat Kidney lysa...



Western blot analysis of Human Heart (La...



Immunofluorescence analysis of HeLa cell...