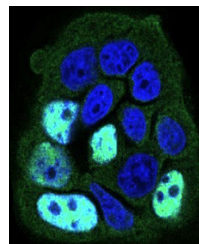


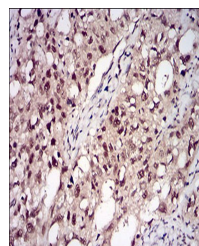
Product Datasheet

PPP1CB Antibody (orb334035)

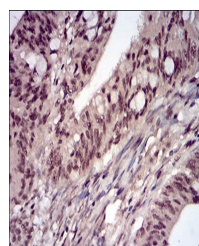
Description	Mouse monoclonal antibody to PPP1CB
Species/Host	Mouse
Reactivity	Human
Conjugation	Unconjugated
Tested Applications	ELISA, FC, ICC, IHC, WB
Immunogen	Purified recombinant fragment of human PPP1CB (AA: 174-327) expressed in E. Coli.
Preservatives	Purified antibody in PBS with 0.05% sodium azide.
Concentration	1mg/ml
Storage	Maintain refrigerated at 2-8°C for up to 2 weeks. For long term storage store at -20°C in small aliquots to prevent freeze-thaw cycles.
Note	For research use only
Isotype	Mouse IgG1
Clonality	Monoclonal
MW	37.2kDa
Entrez	5500
Dilution Range	WB: 1/500 - 1/2000; IHC: 1/200 - 1/1000; ICC: 1/200 - 1/1000; RCM: 1/200 - 1/400; ELISA: 1/10000
Expiration Date	12 months from date of receipt.



Immunofluorescence analysis of MCF-7 cel...



Immunohistochemical analysis of formalin...



Immunohistochemical analysis of formalin...