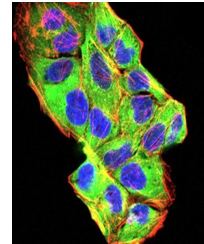


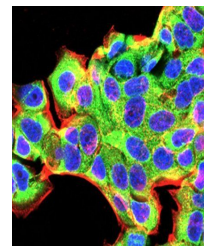
Product Datasheet

BMP2 Antibody (orb334018)

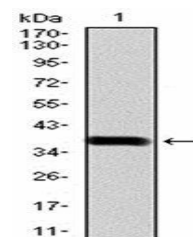
Description	Mouse monoclonal antibody to BMP2
Species/Host	Mouse
Reactivity	Human
Conjugation	Unconjugated
Tested Applications	ELISA, FC, ICC
Immunogen	Purified recombinant fragment of human BMP2 (AA: 283-396) expressed in E. Coli.
Preservatives	Purified antibody in PBS with 0.05% sodium azide
Concentration	1mg/ml
Storage	Maintain refrigerated at 2-8°C for up to 2 weeks. For long term storage store at -20°C in small aliquots to prevent freeze-thaw cycles.
Note	For research use only
Isotype	Mouse IgG1
Clonality	Monoclonal
MW	44.7kDa
Entrez	650
Dilution Range	ICC: 1/200 - 1/1000; RCM: 1/200 - 1/400; ELISA: 1/10000
Expiration Date	12 months from date of receipt.



Immunofluorescence analysis of HeLa cell...



Immunofluorescence analysis of MCF-7 cel...



Western blot analysis of human recombina...