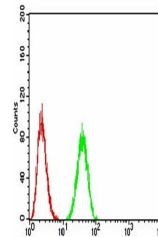


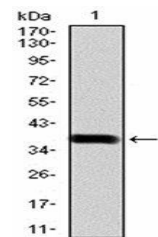
Product Datasheet

BMP2 Antibody (orb334017)

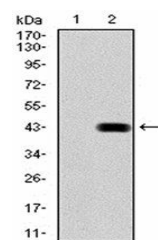
Description	The protein encoded by this gene belongs to the transforming growth factor-beta (TGFB) superfamily. ...
Species/Host	Mouse
Reactivity	Human
Conjugation	Unconjugated
Tested Applications	ELISA, FC
Immunogen	Purified recombinant fragment of human BMP2 (AA: 283-396) expressed in E. Coli
Preservatives	Purified antibody in PBS with 0.05% sodium azide
Concentration	1mg/ml
Storage	4°C; -20°C for long term storage. Avoid freeze/thaw cycles.
Note	For research use only
Isotype	Mouse IgG1
Clonality	Monoclonal
MW	44.7kDa
Entrez	650
Dilution Range	WB 1/500 - 1/2000, FCM 1/200 - 1/400, ELISA 1/10000
Expiration Date	12 months from date of receipt.



Flow cytometric analysis of A549 cells u...



Western blot analysis of human recombina...



Western blot analysis of HEK293 using BM...