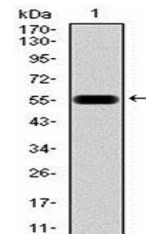


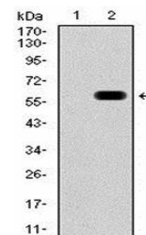
Product Datasheet

ATG16L1 Antibody (orb333991)

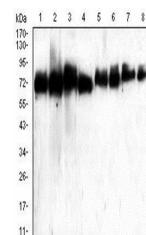
Description	Mouse monoclonal antibody to ATG16L1
Species/Host	Mouse
Reactivity	Human, Mouse, Rat
Conjugation	Unconjugated
Tested Applications	ELISA, FC, WB
Immunogen	Purified recombinant fragment of human ATG16L1 (AA: 11-257) expressed in E. Coli.
Preservatives	Purified antibody in PBS with 0.05% sodium azide
Concentration	1mg/ml
Storage	Maintain refrigerated at 2-8°C for up to 2 weeks. For long term storage store at -20°C in small aliquots to prevent freeze-thaw cycles.
Note	For research use only
Isotype	Mouse IgG1
Clonality	Monoclonal
MW	68.3kDa
Entrez	55054
Dilution Range	WB: 1/500 - 1/2000; RCM: 1/200 - 1/400; ELISA: 1/10000
Expiration Date	12 months from date of receipt.



Western blot analysis of human recombinant ATG16L1.



Western blot analysis of HEK293 cells using ATG16L1 antibody.



Western blot analysis of HeLa (Lane1), R...