

Product Datasheet

LRP1 Antibody (orb333966)

Description	Mouse monoclonal antibody to LRP1
Species/Host	Mouse
Reactivity	Human
Conjugation	Unconjugated
Tested Applications	ICC, IHC
Immunogen	Purified recombinant fragment of human LRP1 (AA: 20-155) expressed in E. Coli.
Target	LRP1
Preservatives	Purified antibody in PBS with 0.05% sodium azide
Concentration	Approximately 1mg/ml (varies from batch to batch). Please inquire for precise concentration.
Storage	Maintain refrigerated at 2-8°C for up to 2 weeks. For long term storage store at -20°C in small aliquots to prevent freeze-thaw cycles.
Note	For research use only
Isotype	Mouse IgG1
Clonality	Monoclonal
Clone Number	1C8G6
Antibody Type	Primary Antibody
MW	504kDa
Uniprot ID	Q07954
Entrez	4035

Biorbyt Ltd.

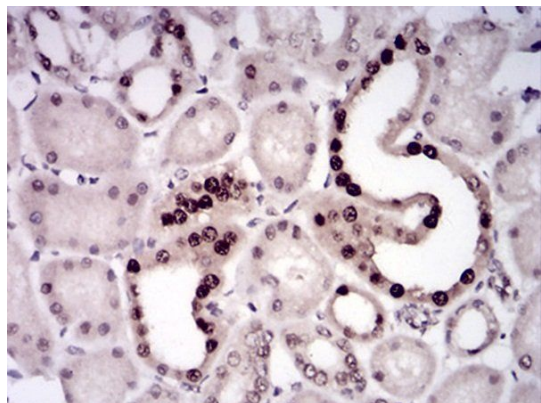
7 Signet Court, Swann's Road,
Cambridge, CB5 8LA, United Kingdom
Email: info@biorbyt.com, support@biorbyt.com
Phone: [+44 \(0\) 1223 859-353](tel:+44(0)1223859353) | Fax: [+1 \(415\) 651-8558](tel:+1(415)6518558)

Biorbyt LLC.

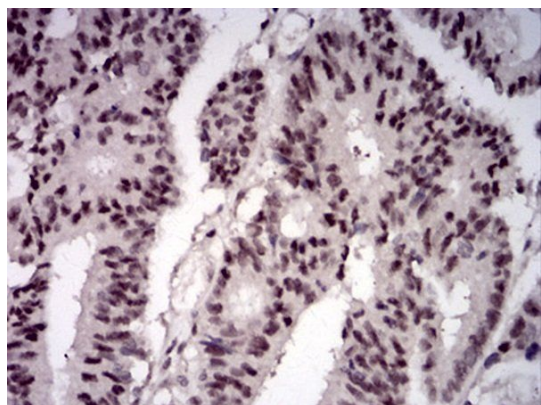
68 TW Alexander Drive,
Durham, NC, 27713, United States
Email: info@biorbyt.com, support@biorbyt.com
Phone: [+1 \(415\) 906-5211](tel:+1(415)9065211) | Fax: [+1 \(415\) 651-8558](tel:+1(415)6518558)

Dilution Range IHC: 1/200 - 1/1000; ICC: 1/200 - 1/1000; ELISA: 1/10000

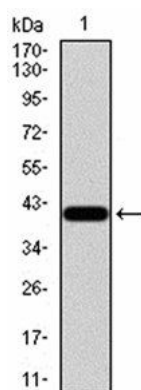
Expiration Date 12 months from date of receipt.



Immunohistochemical analysis of formalin-fixed and paraffin-embedded kidney tissues using LRP1 antibody



Immunohistochemical analysis of formalin-fixed and paraffin-embedded rectum cancer tissues using LRP1 antibody



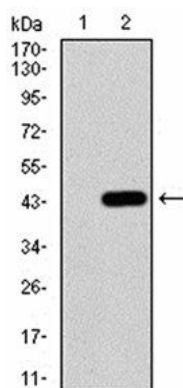
Western blot analysis of human recombinant protein using LRP1 antibody

Biorbyt Ltd.

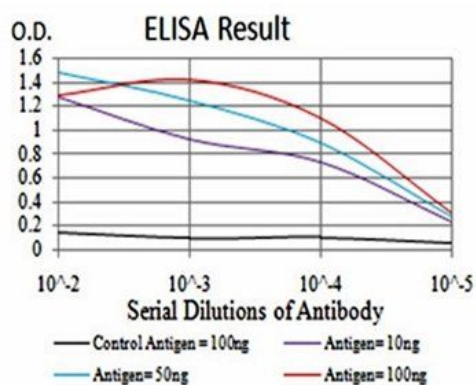
7 Signet Court, Swann's Road,
Cambridge, CB5 8LA, United Kingdom
Email: info@biorbyt.com, support@biorbyt.com
Phone: [+44 \(0\) 1223 859-353](tel:+44(0)1223859353) | Fax: [+1 \(415\) 651-8558](tel:+1(415)6518558)

Biorbyt LLC.

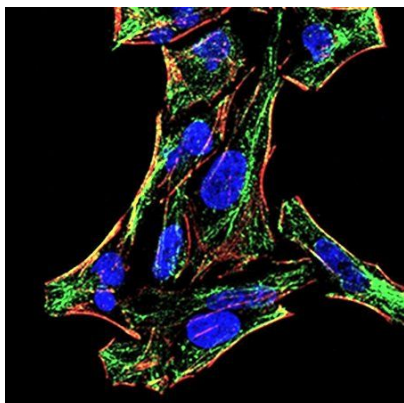
68 TW Alexander Drive,
Durham, NC, 27713, United States
Email: info@biorbyt.com, support@biorbyt.com
Phone: [+1 \(415\) 906-5211](tel:+1(415)9065211) | Fax: [+1 \(415\) 651-8558](tel:+1(415)6518558)



Western blot analysis of HEK293 using LRP1 antibody



ELISA Black line: Control Antigen (100 ng); Purple line: Antigen(10ng); Blue line: Antigen (50 ng); Red line: Antigen (100 ng)



Immunofluorescence analysis of HeLa cells using LRP1 antibody

Biorbyt Ltd.

7 Signet Court, Swann's Road,
Cambridge, CB5 8LA, United Kingdom
Email: info@biorbyt.com, support@biorbyt.com
Phone: [+44 \(0\) 1223 859-353](tel:+44(0)1223859353) | Fax: [+1 \(415\) 651-8558](tel:+1(415)6518558)

Biorbyt LLC.

68 TW Alexander Drive,
Durham, NC, 27713, United States
Email: info@biorbyt.com, support@biorbyt.com
Phone: [+1 \(415\) 906-5211](tel:+1(415)9065211) | Fax: [+1 \(415\) 651-8558](tel:+1(415)6518558)