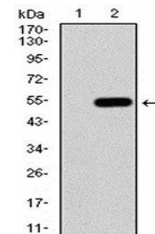


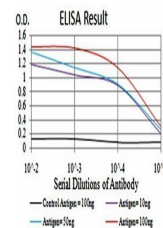
Product Datasheet

KLF6 Antibody (orb333963)

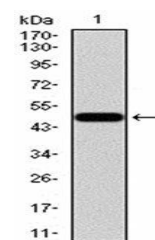
Description	Mouse monoclonal antibody to KLF6
Species/Host	Mouse
Reactivity	Human
Conjugation	Unconjugated
Tested Applications	ELISA
Immunogen	Purified recombinant fragment of human KLF6 (AA: 71-283) expressed in E. Coli.
Preservatives	Purified antibody in PBS with 0.05% sodium azide
Concentration	1mg/ml
Storage	Maintain refrigerated at 2-8°C for up to 2 weeks. For long term storage store at -20°C in small aliquots to prevent freeze-thaw cycles.
Note	For research use only
Isotype	Mouse IgG1
Clonality	Monoclonal
MW	31.8kDa
Entrez	1316
Dilution Range	ELISA: 1/10000
Expiration Date	12 months from date of receipt.



Western blot analysis of HEK293 using KLF6 antibody.



ELISA result showing optical density (O.D.) versus serial dilutions of antibody. Legend: Control Antigen=100ng (black line), Antigen=100ng (red line), Antigen=50ng (blue line), Antigen=100ng (magenta line).



Western blot analysis of human recombinant KLF6 protein.