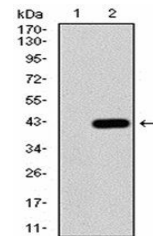


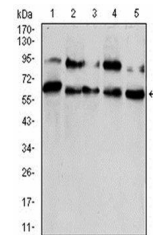
Product Datasheet

CBX2 Antibody (orb333959)

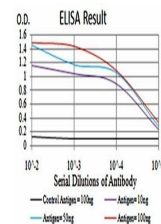
Description	Mouse monoclonal antibody to CBX2
Species/Host	Mouse
Reactivity	Human, Mouse
Conjugation	Unconjugated
Tested Applications	ELISA, WB
Immunogen	Purified recombinant fragment of human CBX2 (AA: 402-525) expressed in E. Coli.
Preservatives	Purified antibody in PBS with 0.05% sodium azide
Concentration	1mg/ml
Storage	Maintain refrigerated at 2-8°C for up to 2 weeks. For long term storage store at -20°C in small aliquots to prevent freeze-thaw cycles.
Note	For research use only
Isotype	Mouse IgG1
Clonality	Monoclonal
MW	56kDa
Entrez	84733
Dilution Range	WB: 1/500 - 1/2000; ELISA: 1/10000
Expiration Date	12 months from date of receipt.



Western blot analysis of HEK293 using CB...



Western blot analysis of HUVEC (Lane1), ...



ELISA Black line: Control Antigen (100 n...